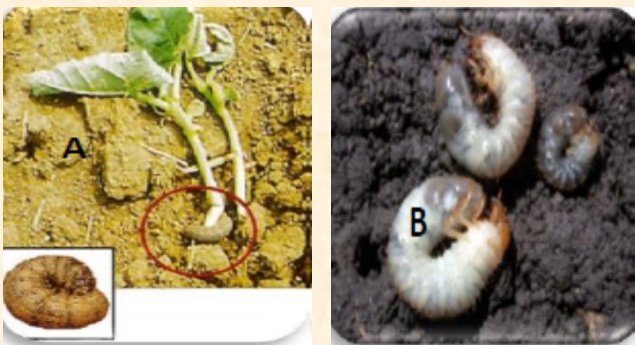
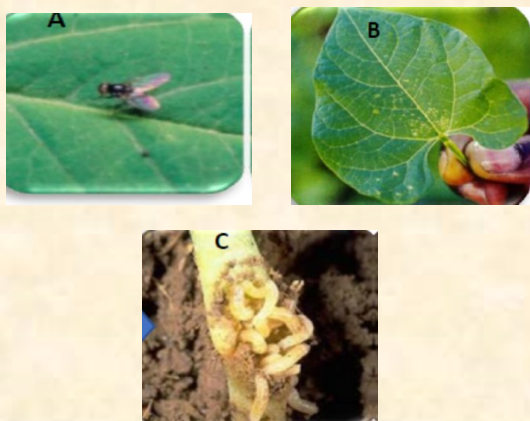


## 1. MPHUNZI NDI MBOZI (CUTWORM)



Nyemba zikangomela zimadyedwa Mmusi mwa mtengo pafupi ndi dothi. Tikafukula pafupi ndi pomwe mtengo wa nyemba yadyedwayo inamera, timapeza mphunziyo. Tizilomboti timakhala mu dothi masana koma timatuluka usiku ndikuononga mbewu yathu.

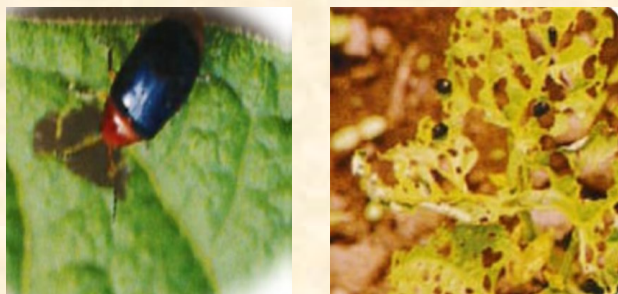
## 2. NTCHECHE ZA MUNYEMBA (BEAN FLY)



Tintchente timayikila mazila mu nyemba zathu. Mazilawo amagomoka naswa timphutsi tomwe timapezeka mkati mwa mtengo wa nyemba. Nyemba zomwe zadyedwa ndi timphutsi zimafota kenaka kuferatu.

Tizilomboti tikhoza kupewedwa pobzala mwamsanga poti timphutsi timapezeka kumathero a nyengo ya mvula ndi kubzala nyemba pamalo a chonde. Tizilomboti timatha popopela phoskil kapena karate.

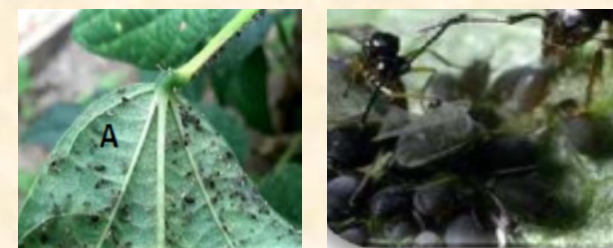
## 3. CHIGUMBU/UKUPE/KANUNDA (BEAN BEETLE)



Tizilomboti timadya masamba anyemba. Masamba amaoneka obookabooka. Tizilomboti timachuluka ndi kubwelenzabwelenza malo obzala nyemba.

Tizilomboti tikhonza kupewedwa pogaula kuti tiphe manthu watizilomboti kapena kusintha mbewu yobzala pobzala mbewu yomwe siili ya mtundu wanyemba. Tingathenso kusintha nthawi yobzala pobzala mochedwelapo kuti tisemphane ndi nyengo yomwe tizilomboti timachuluka.

## 4. NSABWE (APHIDS)

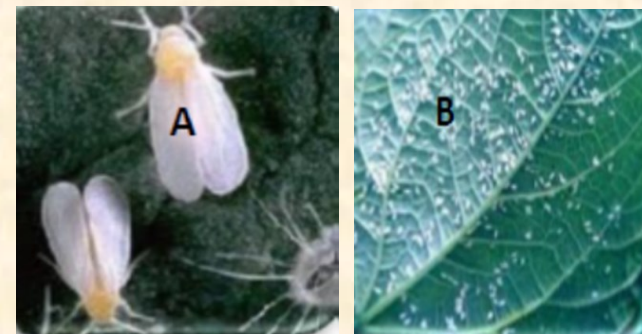


Nsabwe zimapezeka mmasamba kapena mu tunthu la mtengo wa nyemba. Tizilomboti timamwa madzi ammasamba kapena mtengo wa nyemba.

Nsabwe zimachuluka kukakhala ng'amba.

Nsabwe tingathane nazo popopela Mankhwala a Dimethoate. Nsabwe zikhonza kutha pogwilitsa ntchito zinthu zachilengedwe zomwe zimadwa nsabwezo monga nyerere kapena mabvu.

## 5. TINTCHETCHE TOYERA (WHITE FLY)





## **TINA MWA TIZILOMBO TOPEZEKA MU NYEMBA**

Tintchentcheti timabisala kungsi kwamasamba a nyemba. Tizilomboti timamwa madzi mmasamba a nyemba. Zotsatira zake ndizoti masamba amapanga dzimbiri kapena amasanduka chikasu (yellow).

Tintchentcheti tingathane nato popopela cypermethrin kapena Dimethoate.

International Centre for Tropical Agriculture  
P.O.Box 158  
Chitedze  
Lilongwe